

# Spelling Shed

Stage: 1

List: 3

Words ending '-tch'. The /ch/ sound is usually spelt as 'tch' when it comes after a single vowel letter.



Stage: 1	Words ending '-tch'. The /ch/ sound is usually spelt as 'tch' when it comes after a single vowel letter.
List: 3	

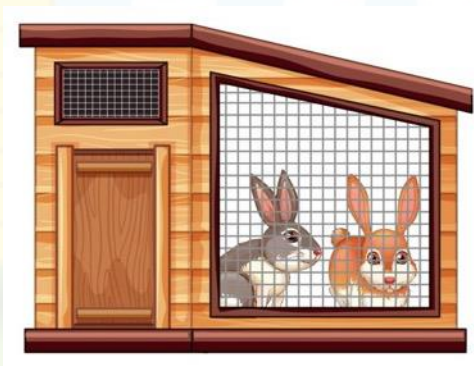
<b>Spellings</b>
catch
kitchen
hutch
ditch
match
fetch
notch
witch
patch
watch

Introduction	Explain how the 'tch' sound is pronounced and ask the children if they can think of any words that contain this sound – give them a clue, e.g. the person flies on a broomstick, you wear this on your arm to tell the time. Get them to say the sound together.
Main Teaching Activity	Ask the children to look at the slide with the images and write down the 6 words, remind them that each of the words will contain 'tch'.  Share the spellings and discuss any mistakes or misconceptions.
Independent Activity	Using the images again, or the other words in the list, ask the children to write sentences using the words, can they make them really interesting?  Share the sentences with the class

What can you see? Write down what these images are:



Spelling Shed





What can you see? Write down what these images are:

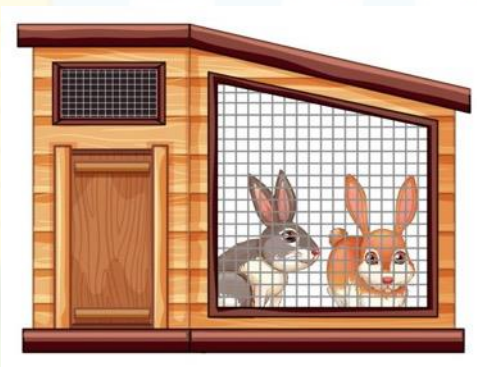
Answers:



watch



kitchen



hutch



match



witch



Stage: 1	Words ending '-tch'. The /ch/ sound is usually spelt as 'tch' when it comes after a single vowel letter.
List: 3	
Name: _____	

Spellings	1 <sup>st</sup> Attempt	2 <sup>nd</sup> Attempt	3 <sup>rd</sup> Attempt	4 <sup>th</sup> Attempt	5 <sup>th</sup> Attempt
catch					
kitchen					
hutch					
ditch					
match					
fetch					
notch					
witch					
patch					
watch					



Stage: 1

Words ending '-tch'. The /ch/ sound is usually spelt as 'tch' when it comes after a single vowel letter.

List: 3

Name: \_\_\_\_\_

## Spellings

catch

kitchen

hutch

ditch

match

fetch

notch

witch

patch

watch

I can \_\_\_\_\_ the ball.

The \_\_\_\_\_ rides a broomstick.

The rabbit lives in his \_\_\_\_\_.

The footballers are playing a \_\_\_\_\_.

The dog will \_\_\_\_\_ the ball.

The food is cooked in the \_\_\_\_\_.

The \_\_\_\_\_ is filled with muddy water.

I wear a \_\_\_\_\_ to tell the time.

Some pirates wear an eye - \_\_\_\_\_.

The tool has a \_\_\_\_\_ for pulling out nails.



Stage: 1

Words ending '-tch'. The /ch/ sound is usually spelt as 'tch' when it comes after a single vowel letter.

List: 3

Answers:

## Spellings

catch

kitchen

hutch

ditch

match

fetch

notch

witch

patch

watch

I can **\_catch\_** the ball.

The **\_witch\_** rides a broomstick.

The rabbit lives in his **\_\_\_hutch\_\_\_**.

The footballers are playing a **\_match\_**.

The dog will **\_\_fetch\_\_** the ball.

The food is cooked in the **\_kitchen\_**.

The **\_\_ditch\_** is filled with muddy water.

I wear a **\_\_watch\_\_** to tell the time.

Some pirates wear an eye - **\_patch\_**.

The tool has a **\_notch\_** for pulling out nails.